



# Shabby Velvet

**CONTRACT COLLECTION**

Shabby Velvet è un velluto ignifugo a maglia realizzato a corpo unico, senza tessuti incollati di sostegno, ideale per realizzare mobili imbottiti anche con particolari forme arrotondate per alberghi e locali pubblici.

Il vello sottile del tessuto è morbidissimo e piacevole al tatto ed è molto resistente sia alle abrasioni che alle sollecitazioni meccaniche.

Shabby Velvet è realizzato con un filato in poliestere con tinte melange, in una gamma di 41 colori disponibili a magazzino.

Shabby Velvet is a fire resistant knit velvet made in one piece without glued support fabrics and ideal for making upholstered furniture with special rounded shapes for hotels and public places.

The fabric surface is extremely soft and pleasant to the touch and is very resistant to both abrasion and mechanical stress.

Shabby Velvet is made from a polyester yarn with melange dyes and comes with a range of 41 colours available on stock.

## SETTORI / SECTORS



## APPLICAZIONI / USES



## CARATTERISTICHE / FEATURES



## SCHEDA TECNICA / TECHNICAL DETAILS

	UNITÀ / UNIT	NORMA / TEST METHOD	VALORI / LIMIT VALUE
Peso / Weight	g/m <sup>2</sup>	-	510
Altezza / Width	cm	-	140
Composizione / Composition	-	-	100% PES
Pelosità superficiale e pilling / Fuzzing and pilling test	-	UNI EN ISO 12945-2	4/5
Resistenza all'abrasione / Abrasion resistance (Martindale)	cicli/cycles	UNI EN ISO 12947-2	100.000
Solidità colori allo sfregamento a secco / Colour fastness to dry rubbing	grey scale	UNI EN ISO 105-X12	4
Solidità colori allo sfregamento a umido / Colour fastness to wet rubbing	grey scale	UNI EN ISO 105-X12	4
Solidità colori alla luce / Colour fastness to light (Xenotest)	blue scale	UNI EN ISO 105-B02	5

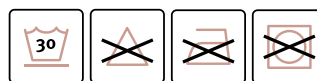


**RESISTENZA AL FUOCO**  
FIRE RESISTANCE

UNI 9175 classe 1IM  
EN 1021-1  
EN 1021-2  
BS 5852 crib 5  
DIN 4102 B1

**NORME DI PULIZIA** — Per le istruzioni dettagliate di lavaggio e manutenzione del tessuto e per conoscere i prodotti più adatti alla sua pulizia, consultare il sito [www.flukso.it](http://www.flukso.it).

**CLEANING INSTRUCTIONS** — Check our website [www.flukso.it](http://www.flukso.it) for detailed washing and maintenance instructions related to the fabric and to know the most suitable cleaning products.



Made in Italy

**Campione gratuito di modico valore non destinato alla vendita, esente IVA punto D - Art. 2 DPR 26.10.1972 n°633. Esente DDT punto 6 - Art. 4 DPR 06.10.1978 n°627.**

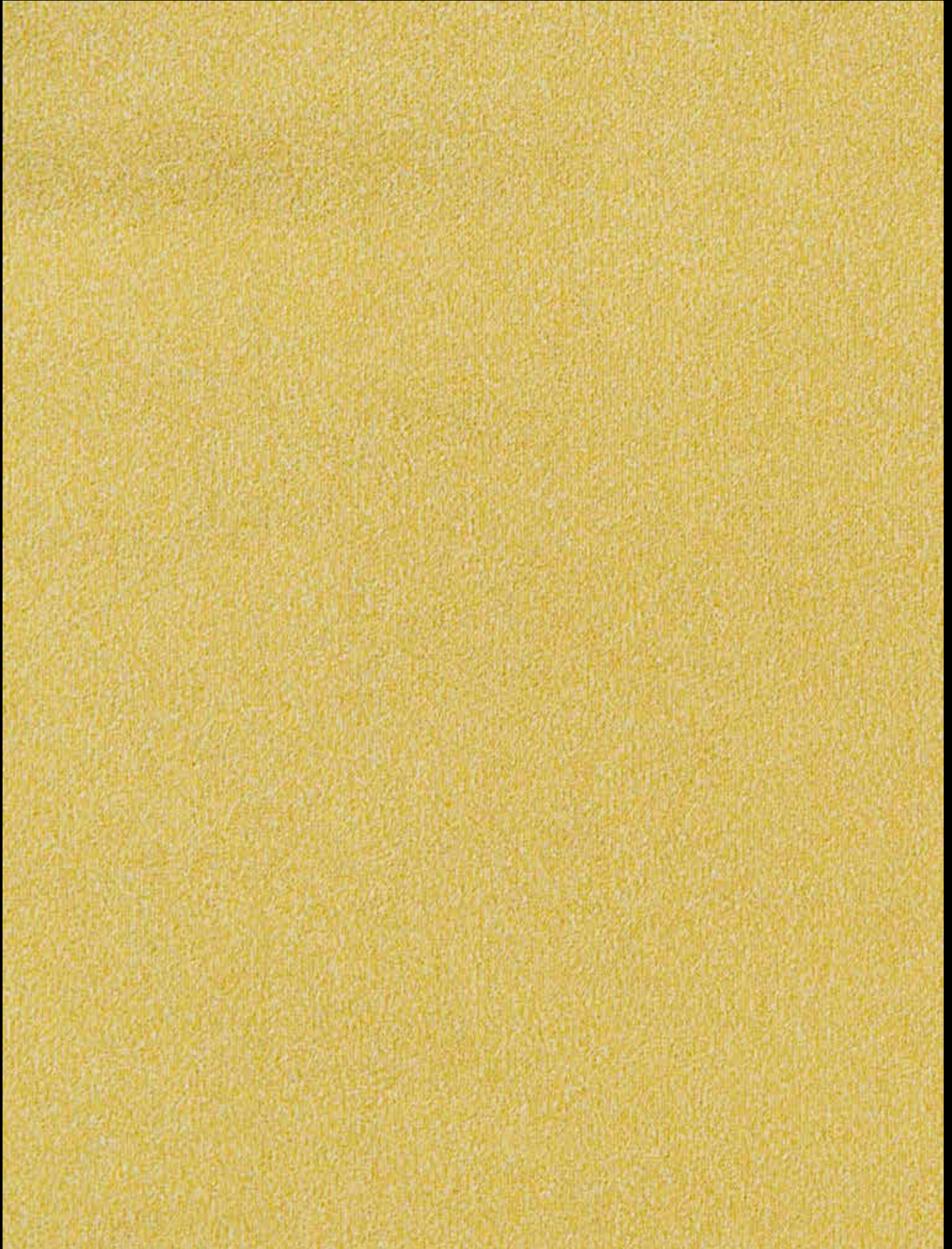
Questi valori sono dati a titolo indicativo ed in buona fede e non possono essere considerati in alcun caso vincolanti. L'impiego del prodotto deve essere valutato in base a ciò che si deve realizzare. Non si risponde del suo utilizzo per impieghi impropri. Sono ammesse leggere differenze di colori tra lotti diversi.

The overmentioned data correspond to average values communicated in good faith, but they cannot be considered as a contract document. The product use has to be considered in term of what has to be realized. The product cannot be held up responsible when it is improperly used. Slight colour differences among several lots are admitted.

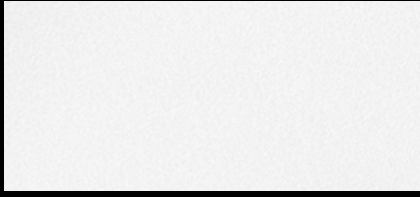


# Shabby Velvet

CONTRACT  
COLLECTION



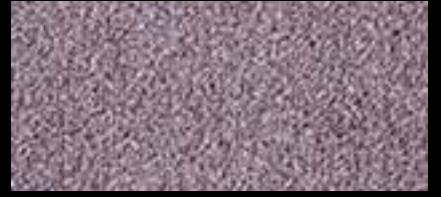




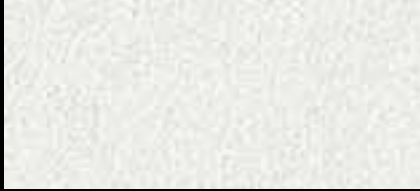
1



8



15



2



9



16



3



10



17



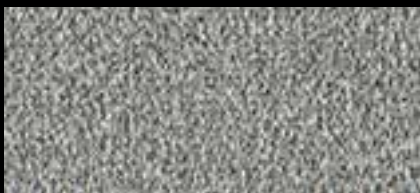
4



11



18



5



12



19



6



13



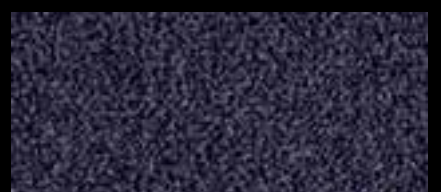
20



7



14



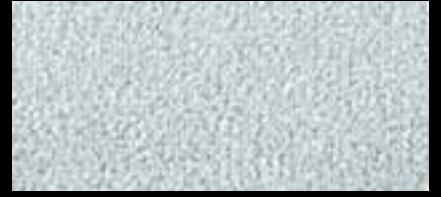
21



22



29



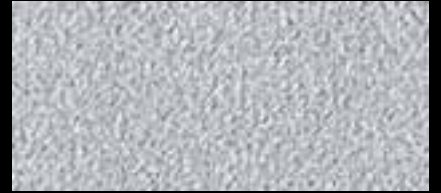
36



23



30



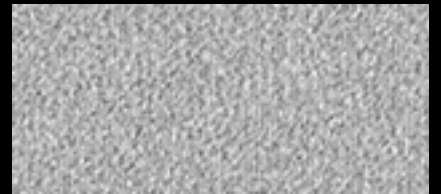
37



24



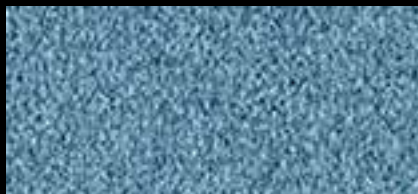
31



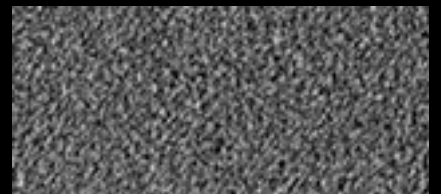
38



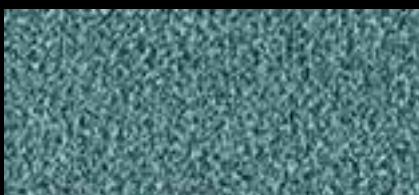
25



32



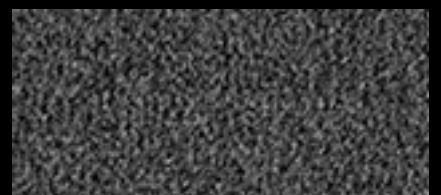
39



26



33



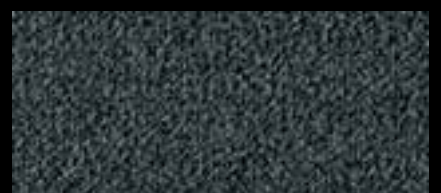
40



27



34



41



28



35