



**Snob FR**  
**Dis. 20 4031**

Texture speciali realizzate con la tecnica della stampa digitale, che donano un tocco ricercato e distintivo ai tessuti con le più elevate performance tecniche della gamma Flukso. Una trasformazione radicale: i motivi studiati esaltano la superficie del tessuto, che acquisisce un'anima decorativa e nuova, in grado di donare personalità ed energia agli ambienti più eleganti.

I pattern proposti da Flukso vengono applicati a una selezione di colori della collezione di partenza, che può essere utilizzata in abbinamento per creare effetti alternati di unito e stampato.

Mescolando le morbide e pastose fibre naturali del cotone con le resistenti fibre del poliestere, Flukso crea il suo velluto Snob FR. Delicato e morbido al tatto, lavabile, resistente all'usura, Snob FR è un velluto innovativo, ideale per tutti i tipi di mobili imbottiti.

Una gamma di eleganti e delicate tinte pastello leggermente melange, ottenute tingendo le due fibre insieme, rendono Snob FR facile da abbinare in ogni ambiente in tutte le sue nuance di colore.

Special textures made by digital printing technique, which give a sophisticated and distinctive touch to the high-performing fabrics of the Flukso range. A radical transformation: the new patterns enhance the fabric surface, which takes on a new decorative soul that gives personality and energy to the most elegant settings.

The patterns proposed by Flukso are applied to a selection of colors from the base collection, which can be combined to create alternating solid and colorful effects.

The soft and rich natural fibers of cotton meet the resistant fibers of polyester. The result is Snob FR, the velvet by Flukso. Delicate and soft to the touch, washable and resistant to wear, Snob FR is an innovative velvet that perfectly adapts to every kind of upholstered furniture.

A range of elegant and delicate pastel colors, slightly mélangé, obtained by dyeing both fibers together. This is what makes all Snob FR nuances easy to combine with any kind of environment.

## SETTORI / SECTORS



## CARATTERISTICHE / FEATURES



## APPLICAZIONI / USES



## SCHEDA TECNICA / TECHNICAL DETAILS

	UNITÀ / UNIT	NORMA / TEST METHOD	VALORI / LIMIT VALUE
Peso / Weight	g/m <sup>2</sup>	-	440
Altezza / Width	cm	-	140 ± 3%
Composizione velluto / Velvet composition	-	-	50% PES - 50% COT
Composizione retrostruttura / Back fabric composition	-	-	100% PES
Composizione totale / Total composition	-	-	67% PES - 33% COT
Pelosità superficiale e pilling / Fuzzing and pilling test	-	UNI EN ISO 12945-2	5
Resistenza all'abrasione / Abrasion resistance (Martindale)	cicli/cycles	UNI EN ISO 12947-2	100.000
Valutazione cambio colore a 12.000 cicli Martindale / Colour change evaluation at 12.000 Martindale cycles	grey scale	UNI EN ISO 105-A02	3/4
Resistenza alla lacerazione / Tear strength	N	UNI EN ISO 13937-2	ordito/warp 65 trama/weft 34
Scorrimento cuciture / Seam slippage	mm	UNI EN ISO 13936-2	ordito/warp 3,4 trama/weft 2,7
Solidità colori allo sfregamento a secco / Colour fastness to dry rubbing	grey scale	UNI EN ISO 105-X12	4
Solidità colori allo sfregamento a umido / Colour fastness to wet rubbing	grey scale	UNI EN ISO 105-X12	4
Solidità colori alla luce / Colour fastness to light (Xenotest)	blue scale	UNI EN ISO 105-B02	5/6

### RESISTENZA AL FUOCO FIRE RESISTANCE

UNI 9175 classe 1IM  
EN 1021-1  
EN 1021-2  
BS 5852-1 cigarette test  
BS 5852-1 match test  
NF P 92 503-507 M2

**NORME DI PULIZIA** — Per le istruzioni dettagliate di lavaggio e manutenzione del tessuto e per conoscere i prodotti più adatti alla sua pulizia, consultare il sito [www.flukso.it](http://www.flukso.it).

**CLEANING INSTRUCTIONS** — Check our website [www.flukso.it](http://www.flukso.it) for detailed washing and maintenance instructions related to the fabric and to know the most suitable cleaning products.



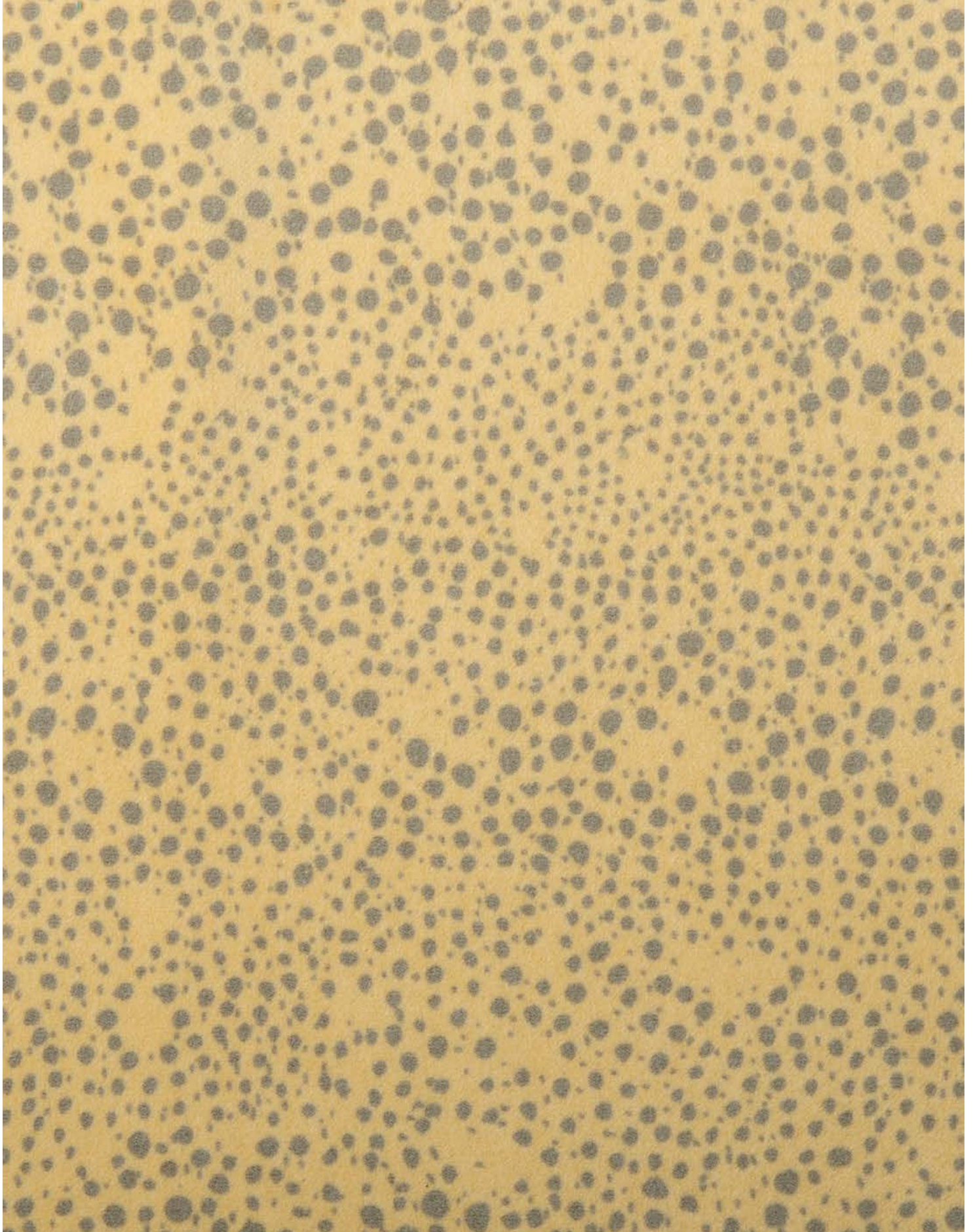
**Campione gratuito di modico valore non destinato alla vendita, esente IVA punto D - Art. 2 DPR 26.10.1972 n°633. Esente DDT punto 6 - Art. 4 DPR 06.10.1978 n°627.**

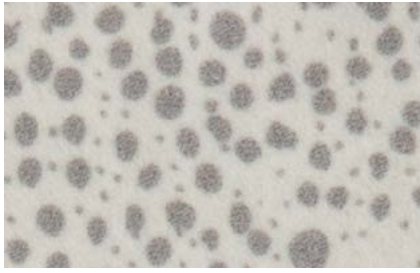
Questi valori sono dati a titolo indicativo ed in buona fede e non possono essere considerati in alcun caso vincolanti. L'impiego del prodotto deve essere valutato in base a ciò che si deve realizzare. Non si risponde del suo utilizzo per impieghi impropri. Sono ammesse leggere differenze di colori tra lotti diversi.

The overmentioned data correspond to average values communicated in good faith, but they cannot be considered as a contract document. The product use has to be considered in term of what has to be realized. The product cannot be held up responsible when it is improperly used. Slight colour differences among several lots are admitted.

Snob FR Dis. 20 4031

**CONTRACT & RESIDENTIAL  
PRINTED COLLECTION**

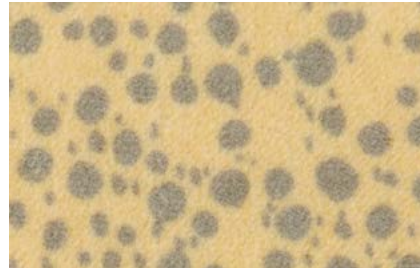




6035



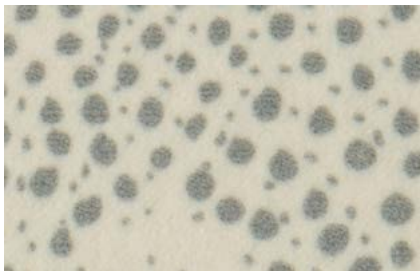
2035



6022



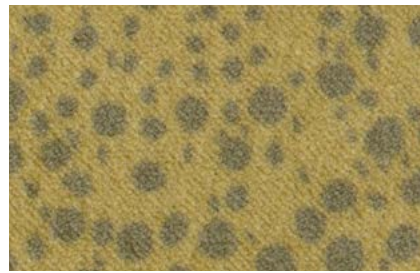
2022



6025



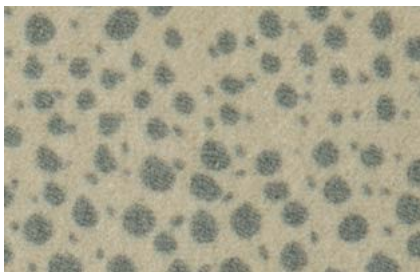
2025



6001



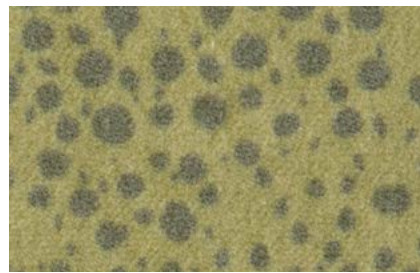
2001



6024



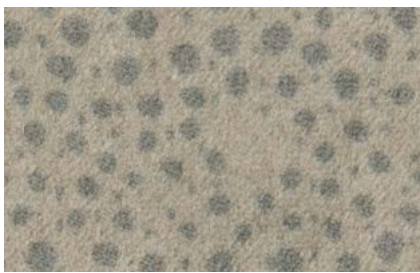
2024



6002



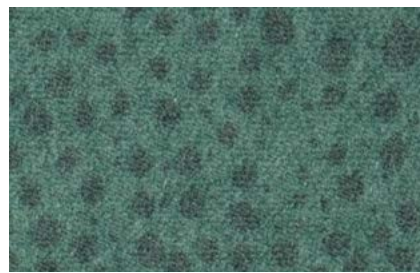
2002



6029



2029



6006



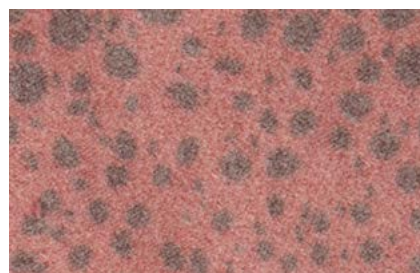
2006



6036



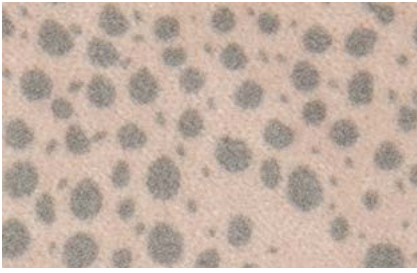
2036



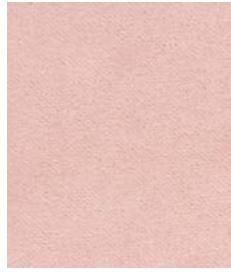
6031



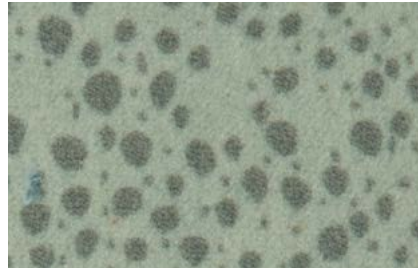
2031



6033



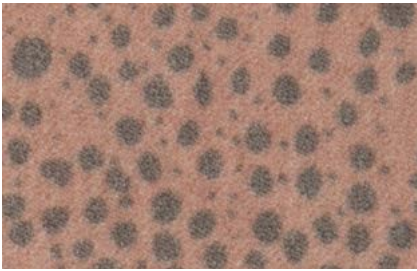
2033



6018



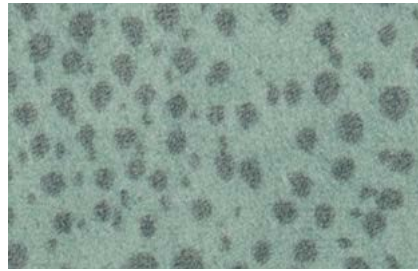
2018



6012



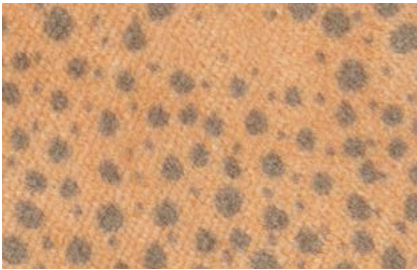
2012



6019



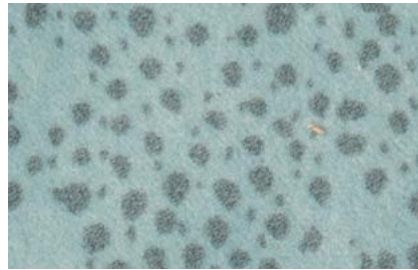
2019



6030



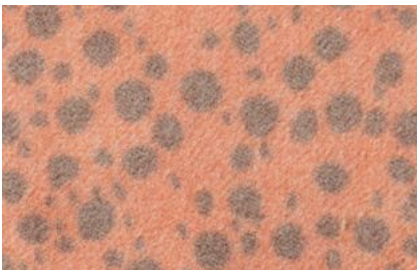
2030



6007



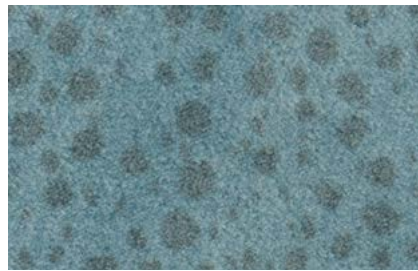
2007



6013



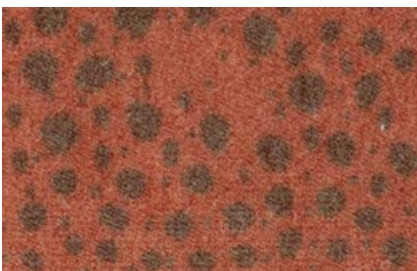
2013



6008



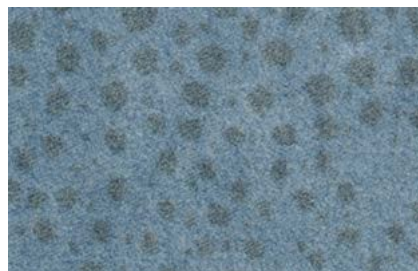
2008



6014



2014



6010



2010

LOTTO 30R7 0001

**FLUKSO®**

G.S. S.r.l.  
S.S. Pontebbana  
Km 146,10 – n. 54/B  
33017 Collalto – Tarcento  
Udine – Italia  
T. +39 0432 783992  
info@flukso.it  
www.flukso.it